

METROPLAST



**Speed Governor A3
Installation Manual**

CONTENTS

1. Introduction.....1

2. Sign Analysis.....1

3. General Rules.....2

4.1 General Installation Type.....3-4

5. Important Warnings.....6

6. Label Sample.....6

7. Maintenance Details6

8. Significant Conditions to Be Paid Attention.....7

9. Electrical Connection.....7

10. Commencement.....7

11. Recovery from Locking.....8

12. A3 Model.....8

13. Appendix 1- Governor Locking Registry Form.....9

14. Certificates10

1. — INTRODUCTION:

The Speed Governor is the security guard which steps in and provides movement transmission by the help of the rope on it in the event that the declared speed in elevators exceeds the tolerances that are determined in upper and lower directions.

The Speed Governor is determined in accordance with the declared speed value. 115 % of such speed should not be stepped in. In this range, EN 81 -1 and EN 81 -2 standard, locking operation between 25 % and 50 % occurs in 1 m/s or lower values.

Application is specified as $1.25 \cdot V + 0.25/V$ m/s in terms of values greater than 1 m/s and in such ranges, mechanical locking occurs.

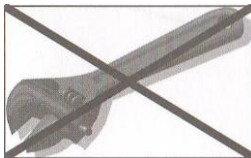
The electric current going to the engine is cut off by means of a switch on it following the mechanical locking of the product, and the said switch has a reset function, so the reset button must be turned on in order that the product can re-operate. In addition, the governor locking position protection must be operated by moving it in a contrary way to the product locking direction in order to take it in a position that can be re-operated.

The nominal diameter of the rope providing movement transmission between the governor and jockey pulley should be 6 mm (EN 81 – 1 / 9.9.6.3).

2. --- SIGN ANALYSIS:



It means that ATTENTION should be paid and carries high risks, so the instructions must be completely performed.



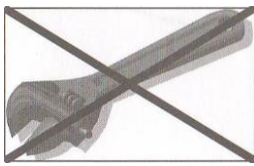
It means that NO ADJUSTMENT is made.

3.—GENERAL RULES:

This installation manual has been prepared for realization of connection of the product in a safe way, and for maintenance of security equipment.



- KEEP THE MANUAL IN A PLACE WHERE ALL STAFF INTERESTED IN THIS JOB CAN EASILY READ IT.
- PRIOR TO MOUNT OPERATION, DO NOT START CONNECTION PROCESSES BEFORE READING THE WHOLE OF THIS MANUAL.



*Responsibility in terms of the faults to occur during the product installation is completely on the company that will perform the mounting operations. Under no circumstances must any addition or change be made on the product without consent of the manufacturer. Spare parts cannot be purchased out of manufacturing company, and additions and non-original part replacements cannot be performed.

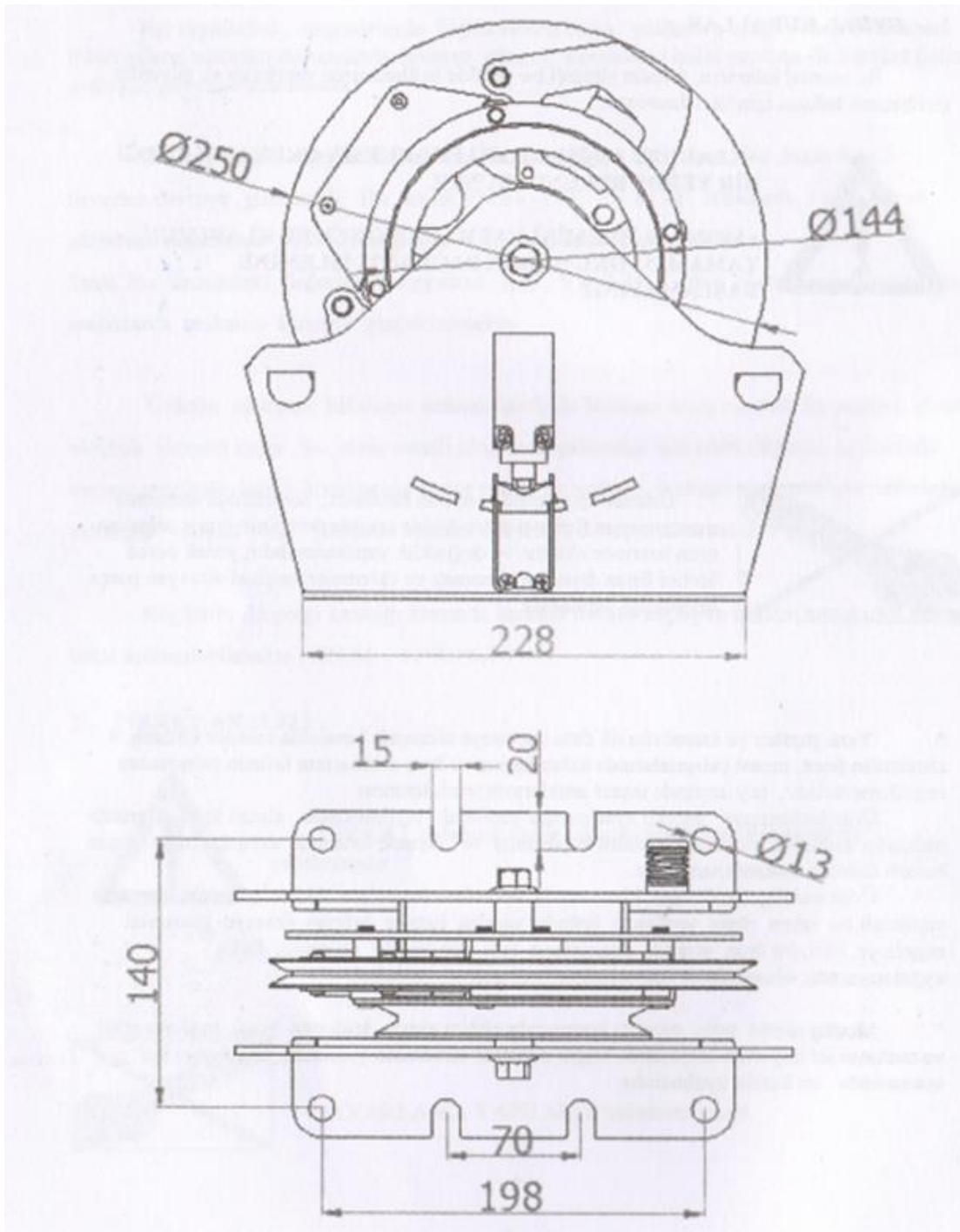
* Debris and mortar residuals remaining from construction works must not prevent the operation of product in buildings which are newly constructed and where the elevator is firstly commenced. Construction residuals on the rail should be cleaned.

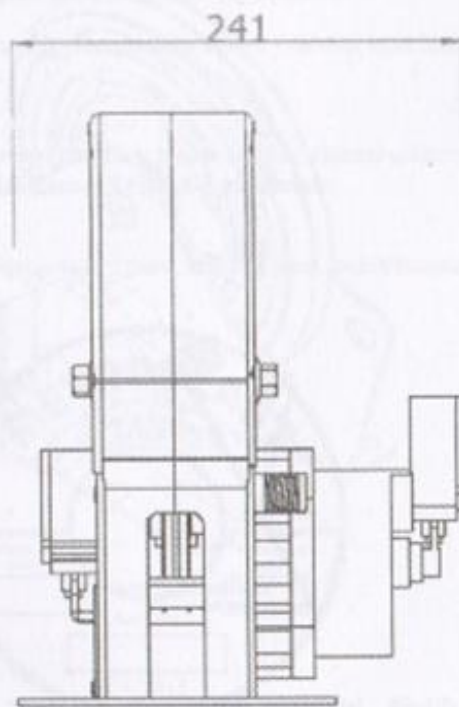
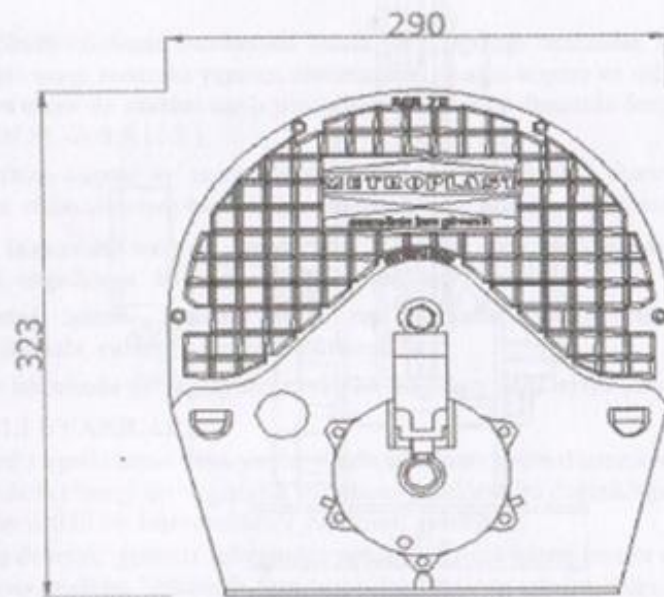
The product is delivered to the user after the necessary adjustments have been completed, so the seal on the purchased product should be checked and the products, seals of which are removed, and those are damaged during the shipment must not be used.

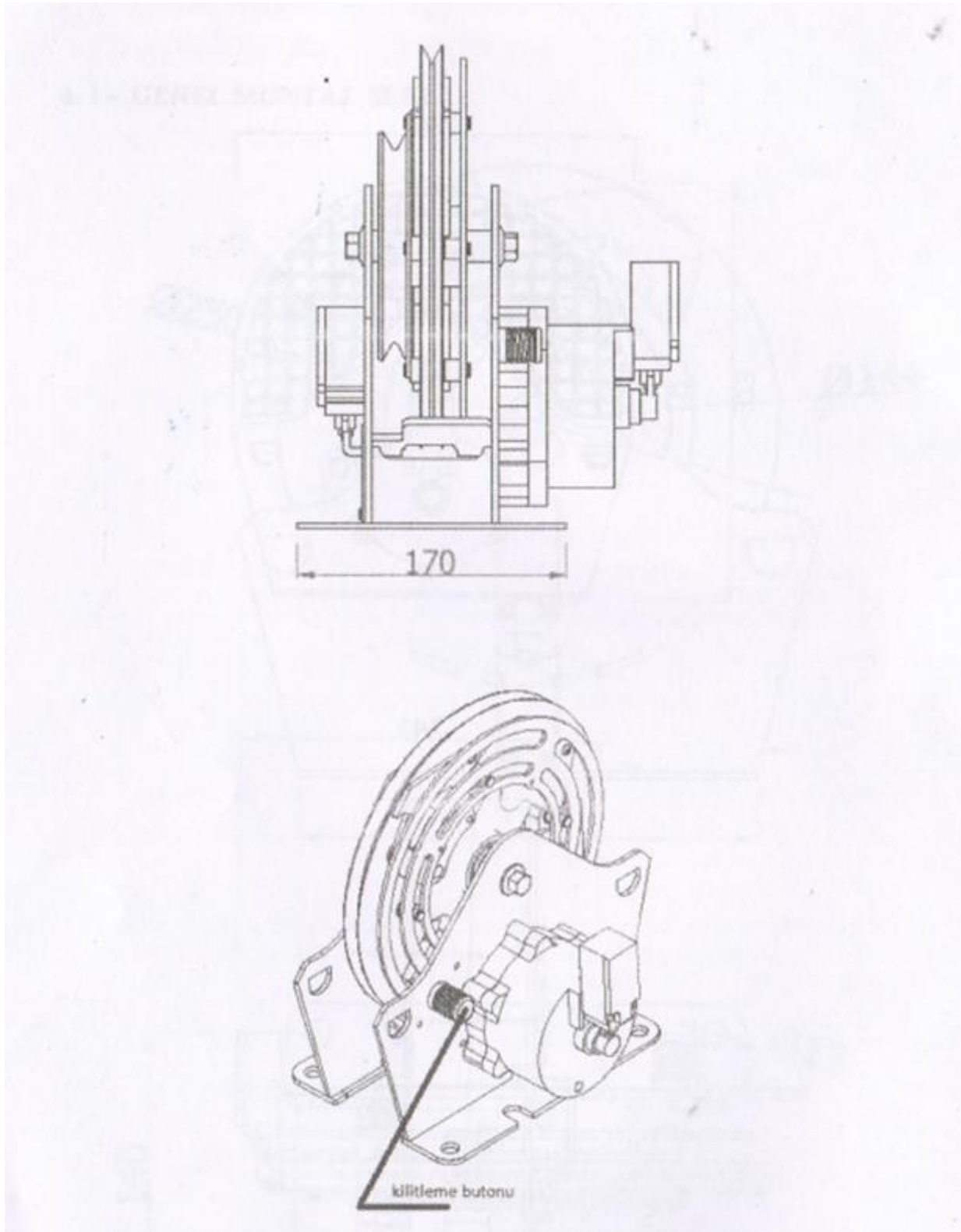
*The products installation must be performed by precisely paying attention to the issues specified in the product manual because the faults that can be possibly made during installation can prevent the commencement of the product. This product has been made for elevator applications, therefore, the troubles that can arise from the usage of the product in different ways are under the responsibility of the user.

*Installation operations must be performed by the staff trained about the product installation and having information about the usage direction, connection type and strength values, this rule must be obeyed in each step of this operation.

4.1. - GENERAL INSTALLATION TYPE:







Locking button: It is used in low speed brake tests. The governor is locked by pressing this button while the elevator is in action. During this process, the button should be pressed continuously until brake locking emerges.

In order to recover the elevator from locking, stop pressing the button and move the elevator in contrary to the locking direction.

The Speed Governor must be reciprocally connected two steel dowels at least, and the installation process must be performed by taking the directions specified on the product into consideration.

In the event of governor locking, the rope is applied a load more than 300 N by the tension weight, so check the tension. The pulley moves downstream with the effect of tension spring due to elongation, fracture and other reasons in the ropes. In this case, security switches step in (EN 81 – 1 / 9.9.11.3).

*** Security switch must step in case of fracture and sag of the ropes, so it must be ensured that the switches are operational. Thus this condition must be checked, otherwise it means that the installation process is delinquently performed.

*** **Jockey pulley must be ensured only by means of spring that is placed for tension. The system must be protected against the cases preventing the operation of tension spring.**

The rope should be thrown into the test channel and the product should be tested following the installation process, and it should be controlled that the switches are fully operational.

Tension springs should be placed into revision connection holes in testing process.

5. – IMPORTANT WARNINGS:

Erroneous adjustment or placement in a wrong direction of the product may result in cabinet fall. In the event that any change is required in terms of new adjustments, it is essential that those changes be discussed with the manufacturing company, and be made by an authorized personnel.

Recovery operation following the commencement of the governor should also be performed by a qualified personnel. Any risks resulting from changes on products made without the knowledge of manufacturing company, and from usages out of its objectives are under the responsibility of assembly firm.

The security guard should be operated after it is made sure that there exists no deformation on any of working parts after each usage. Electrical connections of the product should be wholly made.



The security guard should be readjusted after 20 trials and its parts should be replaced.



Under no circumstances can any addition, extraction or adjustment regarding the safety guard be made without the knowledge of the manufacturing company.

Serial number, operating speed and maximum locking speed are specified on the product.

6. - LABEL SAMPLE



7. – MAINTENANCE DETAILS

Controls of switches should be made during regular maintenances and it should be made sure that they operate properly. Jockey pulley should be controlled and it should be protected against the factors that can prevent tension weight from operating.

Rope grooves should be checked against corrosions, and in case of a corrosion, they should be replaced.

“The security guard should be readjusted after 20 trials and its parts should be replaced.”



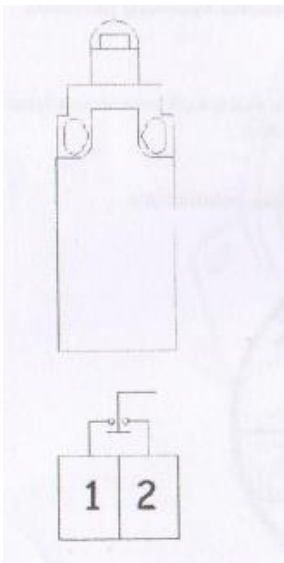
Under no circumstances should any repair be made on the security guard. If it is necessary, parts can be replaced with the approval of manufacturing company.

8. - SIGNIFICANT CONDITIONS TO BE PAID ATTENTION

- Installation operation should be performed by trained personnel.
- This security equipment has been manufactured in accordance with the safety standards. Nevertheless, please use protective clothes and material during the installation process.
- Please take precautions against falling, crashing and any kind of deformation lest the products are damaged
- Please take the necessary safety precautions during the installation processes in high places. Wear barrette and safety belt and make sure that the installation place is safe.

9. Electrical Connection Scheme

The Scheme of Electrical Connection of Governor and Jockey Pulley



Electrical Connection

Maximum Voltage 230 V

Maximum Ampere 3.A

Cable Section 0.75 mm²NYA

10. Commencement:

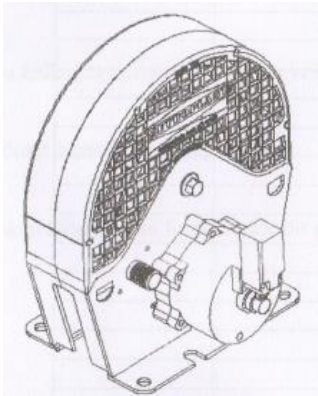
Before the product is started to be used, the speed is increased at a rate of 145% of cabinet speed and locking operation is performed by passing the rope through test channel.

Any product not providing good results in the test should not be used.

11. Recovery from locking

- It is recovered by moving the cabinet 20 – 30 mm in contrary to the locking direction.
- Groove channel and brake connection must be checked after locking.
- These operations should be recorded in Appendix 1 Form.

12. A3 Model



There are two types of product, DC 24 V and DC180 V, in applications according to EN 81 – 1 A3

Operation type of the product: When the elevator cabinet is in action, the locking bar on the coil is pulled through the current given onto the coil and the governor switches to the normal operation mode. Whenever the elevator stops, the current given to the coil is cut off and locking bar on the coil transfers to the sections on the A3 delay pulley controlled by the springs fixed on the body of the governor and thus the governor is locked.

The condition of locking on the coil is controlled by the help of the switch on the coil.

Appendix 1- Registry Form

Locking and Registry Form

Order	Date	Locking	Locking Load
1			
2			
3			
4			
5			
6			
7			
8			
9			
10			
11			
12			
13			
14			
15			
16			
17			
18			
19			
20			

Declared Speed (m/s)	Locking Speed (m/s)
0.40	0.60
0.50	0.75
0.63	0.94
0.80	1.20
1.00	1.50
1.20	1.70
1.60	2.16
2.00	2.62
2.50	3.22



Strojirenský zkušební ústav, s.p.
Notified body, identification No. 1015

CERTIFICATE

EC TYPE EXAMINATION
Module B

No.: I-61-15109/12/ZZ

issued by the part A of the Annex V of the Directive of the European Parliament and Council 95/16/EC

Manufacturer:

METROPLAST ASANSÖR MALZEMELERİ LTD. ŞTİ.
Hürriyet Mh. Ulus Cad. Erler Sk. No:5 Kartal - Istanbul - Turkey

Product:

Safety components

Overspeed Governor

(with additional equipment as required by Article 9.11.1 EN 81-1 and 2+A3)

Type:

REG A3

Versions:

REG A3: REG A3/063, REG A3/08, REG A3/100, REG A3 /120, REG A3/160

Product specification:

See Annex No. I-61-15109/12/ZZ/1

The above introduced notified body by this Certificate certifies conformity of the subject sample of safety component properties with requirements of the

Directive of the European Parliament and Council 95/16/EC by Annex V, part A (module B)

Base for this Certificate issuing is carried out conformity assessment by the module B, evaluated in the part I. of the Inspection findings, Inspection report No. 66-6812 dated August 28, 2012. Integral part of this Certificate is the Annex No. I-61-15109/12/ZZ/1 dated August 28, 2012.

Rules for treatment with the Certificate are introduced in conclusion of the Inspection report.

Validity of the Certificate EC type examination is limited on period of 5 years.

In Brno, on August 28, 2012



Ing. Jiří Rozsival, MBA
Deputy director

The Certificate consists of 1 page
+ 2 pages of the Annex.

Strojirenský zkušební ústav, s. p., Hudcova 56b, 621 00 Brno, Česká republika
Engineering Test Institute, public enterprise, Hudcova 56b, 621 00 Brno, Czech Republic

www.szutest.cz

METROPLAST

ASANSÖR MALZEMELERİ İMALAT LTD. ŞTİ

ORTA MAH. FUNDA SOK. NO: 23 PENDİK/İSTANBUL

TEL: 0216 -671 11 01 - 02 -03

FAX: 0216- 671 - 11 - 00

- The figures and measurements in this manual are binding.
- Under no circumstances can it be reproduced without permission.
- Under no circumstances is our company responsible for printer's errors.